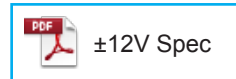
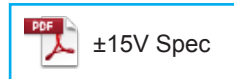


HC-W



- Rated current 50A ~ 300A
- Two circuits can be measured at the same time
- Single-power supplies also available
- For additional ±15V and ±12V products, contact sales@dgseals.com or click below

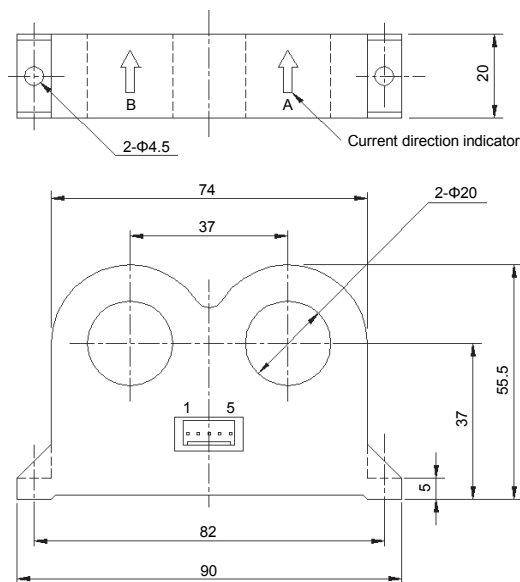


Applications

Inverters, Power supply equipment, NC machine tools

Dimensions

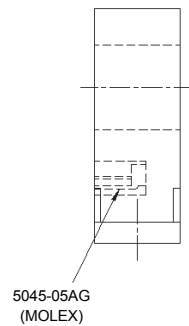
(mm)



Supported connector housing
 5051-05 (MOLEX)

- Terminal No.
- 1 - GND
 - 2 - B-phase output
 - 3 - A-phase output
 - 4 - (-) terminal
 - 5 - (+) terminal

Weight : 106g



General tolerance: ±0.5

Specification

Ta=25°C

Type	HC-W050V4B15	HC-W100V4B15	HC-W300V4B15
Rated current [If]	±50A	±100A	±300A
Saturation current [Is]	±150A	±300A	±700A
Linearity limits	0~±150A	0~±300A	0~±600A
Rated output [Vh]	±4V±1.5%	±4V±1%	
Residual output [Vo]	Within ±50mV	Within ±30mV	
Output linearity	Within ±1%		
Response time	Within 10µs (The smaller one on either at di/dt = 100A/µs or If/µs.)		
Response performance	Within 10%		
Hysteresis voltage range	Within 30mV		
Output Temp. Coef.	Within ±0.08%/°C		
Residual output Temp. Coef.	Within ±2.5mV/°C	Within ±1.5mV/°C	
Control power supply	±15V±5%		
Consumption current	Within 60mA		
Operating Temp.	-10°C~+80°C		
Storage Temp.	-15°C~+85°C		
Dielectric withstand voltage	2500V AC 50/60Hz 1minute		
Insulation resistance	Not less than 500MΩ 500V DC		

Note1) The indicated rated output is the one when no load is applied.

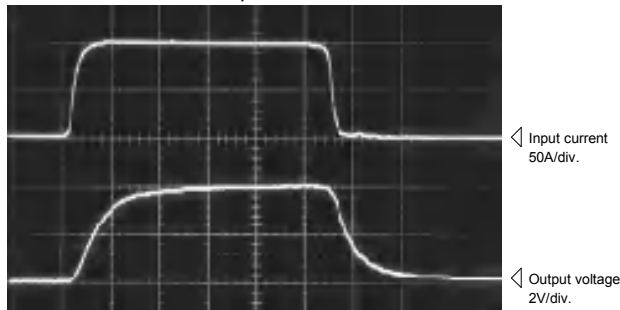
Note2) The indicated residual voltage is the one after the core hysteresis is removed.

Characteristics chart

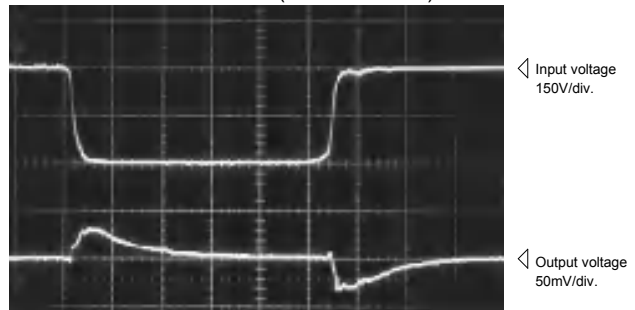
HC-W100V4B15

5µs/div. Time base

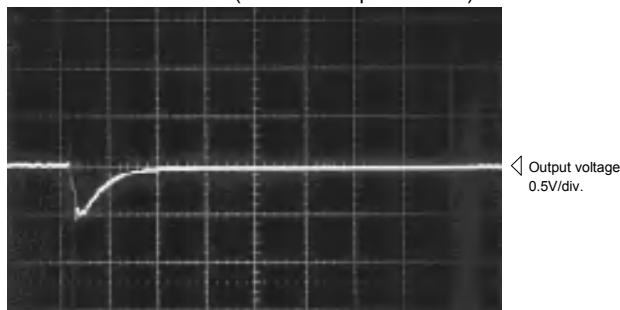
Pulse current response characteristic



Noise characteristics (Effects of dv/dt)

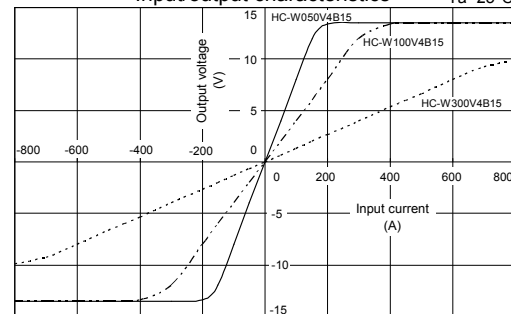


Noise characteristics (Effects of impulse noise)



Input/output characteristics

Ta=25°C



Note: The marks "◁" means 0V or 0A.