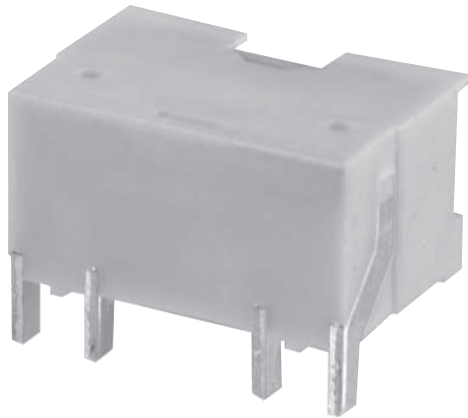


HC-PRX



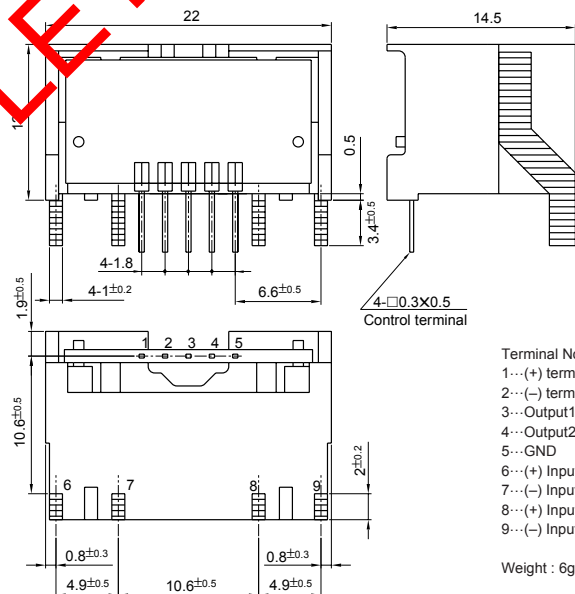
- Well isolated for European Standards
- Rated current 25A ~ 50A
- Compact design : height has been kept down to 12.0mm
- Single-power supplies also available
- Two circuits can be measured at the same time.

Applications

Inverters, servo drivers, NC machine tools

Dimensions

(mm)



- Terminal No.
- 1...(+ terminal
 - 2...(- terminal
 - 3...Output1
 - 4...Output2
 - 5...GND
 - 6...(+ Input1
 - 7...(- Input1
 - 8...(+ Input2
 - 9...(- Input2

Weight : 6g

Specification Ta=25°C

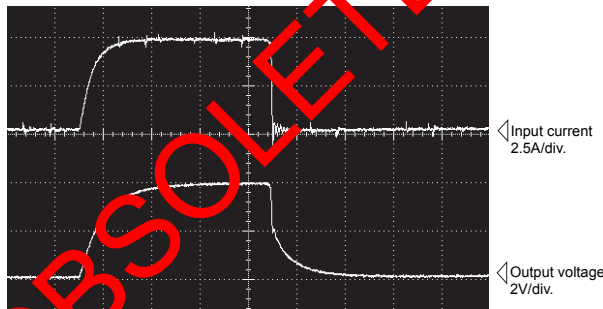
Type	HC-PRX25V4B15U	HC-PRX30V4B15U	HC-PRX40V4B15U	HC-PRX50V4B15U
Rated current [If]	±25A	±30A	±40A	±50A
Saturation current [Is]	±75A	±90A	±90A	±90A
Linearity limits	0~±75A	0~±75A	0~±75A	0~±75A
Size of primary winding	□1X2	□1X2	□1X2	□1X2
Turns	1	1	1	1
Rated output [Vh]	±4V±1.5% (RL=10kΩ)(including the residual output)			
Residual output [Vo]	Within ±100mV			
Output linearity	Within ±1%			
Response time	Within 10μs (at di/dt=1f/s)			
Response performance	Within 10%			
Hysteresis voltage range	Within 120mV			
Output Temp. Coef.	Within ±0.1%/°C			
Residual output Temp. Coef.	Within ±5mV/°C			
Control power supply	±1.5V±5%			
Consumption current	Within 40mA			
Operating Temp.	-10°C~+80°C			
Storage Temp.	-15°C~+85°C			
Dielectric withstand voltage	2500V AC 50/60Hz 1minute			
Insulation resistance	Not less than 500MΩ 500V DC			

Note1) The indicated residual voltage is the one after the hysteresis is removed.

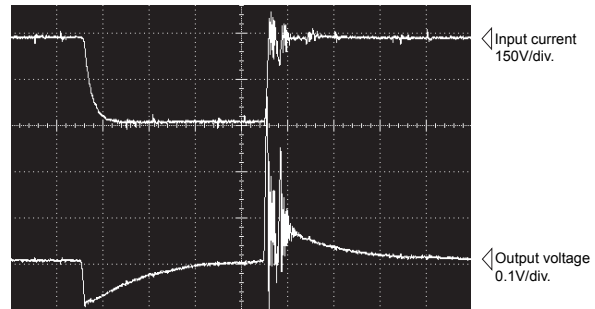
Note2) For continuously flowing DC currents, see the principal characteristics marked by an asterisk (※) on page 1-5.

Characteristics chart HC-PRX05V4B15U

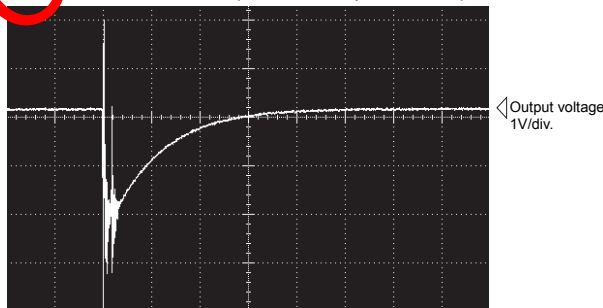
Pulse current response characteristic



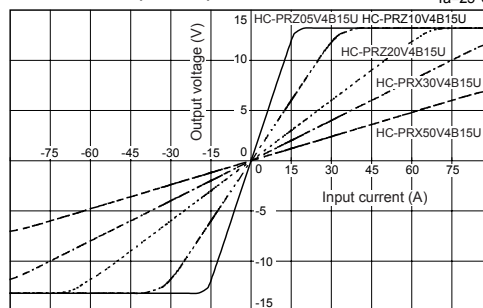
Noise characteristics (Effects of dv/dt)



Noise characteristics (Effects of impulse noise)



Input/output characteristics



Note : The mark "◁" means 0V or 0A.