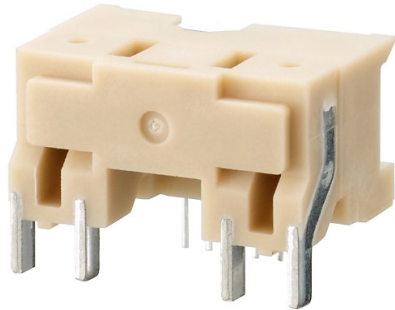


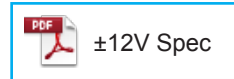
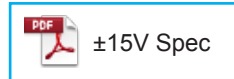
HC-PRD



- Rated current 25A ~ 50A
- Well isolated for European Standards
- Compact design: height has been kept down to 12.0 mm
- Single-power supplies also available
- Two circuits can be measured at the same time
- For additional ±15V and ±12V products, contact sales@dgseals.com or click below

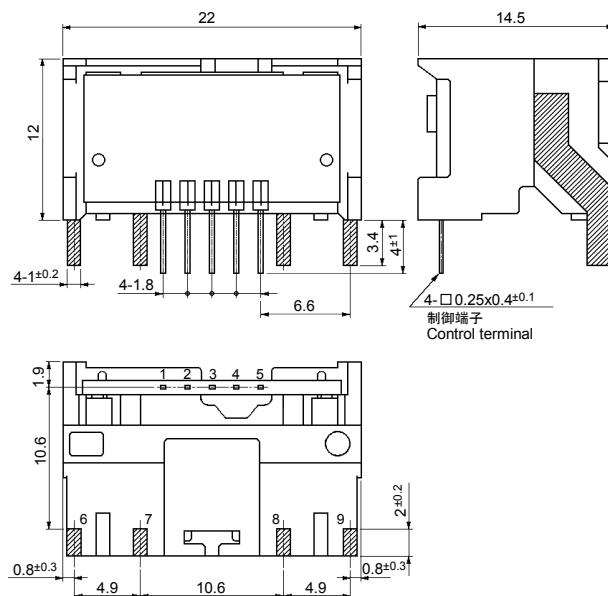
Applications

Inverters, Servo drivers, NC machine tools



Dimensions

(mm)



- Terminal No.
- 1 - (+) terminal
 - 2 - (-) terminal
 - 3 - Output1
 - 4 - Output2
 - 5 - GND
 - 6 - (+) input
 - 7 - (-) input
 - 8 - (+) input
 - 9 - (-) input

Weight : 6g

General tolerance: ±0.5

Specification

Ta=25°C

| Type | HC-PRD25V4B15 | HC-PRD30V4B15 | HC-PRD40V4B15 | HC-PRD50V4B15 |
|---------------------------------|------------------------------|----------------------|---------------|---------------|
| Rated current [If] | ±25A | ±30A | ±40A | ±50A |
| Continuously flowing DC current | ±35A | ±35A | ±35A | ±35A |
| Saturation current [Is] | ±75A | ±90A | ±90A | ±90A |
| Linearity limits | 0~±75A | 0~±75A | 0~±75A | 0~±75A |
| Size of primary busbar | □1 x 2 | □1 x 2 | □1 x 2 | □1 x 2 |
| Turns | 1 | 1 | 1 | 1 |
| Rated output [Vh] | +If | V0+4V±1.5% (RL=10kΩ) | | |
| | -If | V0-4V±1.5% (RL=10kΩ) | | |
| Residual output [Vo] | Within ±100mV | | | |
| Output linearity | Within ±1% | | | |
| Response time | Within 10μs (at di/dt=If/μs) | | | |
| Response performance | Within 10% | | | |
| Hysteresis voltage range | Within 120mV | | | |
| Output Temp. Coef. | Within ±0.1%/°C | | | |
| Residual output Temp. Coef. | Within ±3mV/°C | | | |
| Control power supply | ±15V±5% | | | |
| Consumption current | Within 40mA | | | |
| Operating Temp. | -10°C~+80°C | | | |
| Storage Temp. | -15°C~+85°C | | | |
| Dielectric withstand voltage | 2500V AC 50/60Hz 1minute | | | |
| Insulation resistance | Not less than 500MΩ 500V DC | | | |

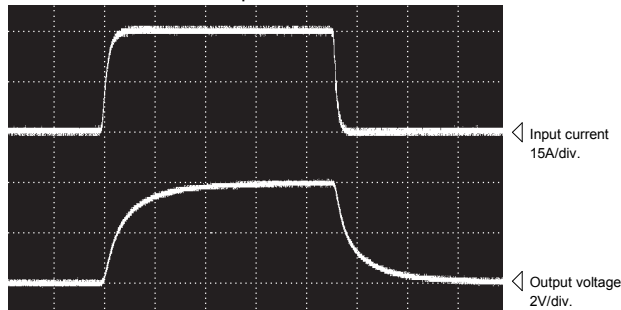
Note1) The indicated residual voltage is the one after the core hysteresis is removed.

Characteristics chart

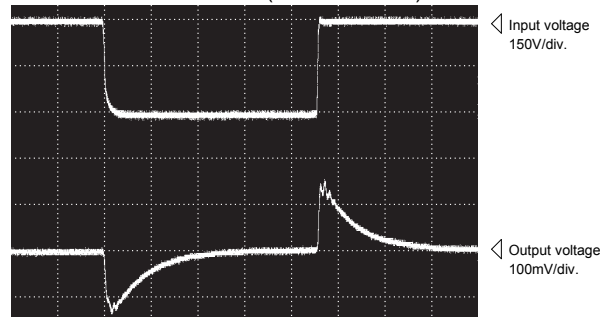
HC-PRD30V4B15

5μs/div. Time base

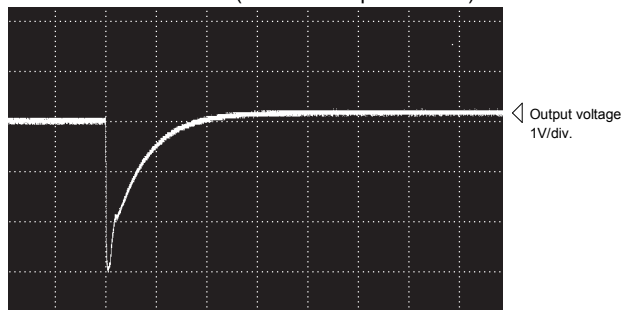
Pulse current response characteristic



Noise characteristics (Effects of dv/dt)

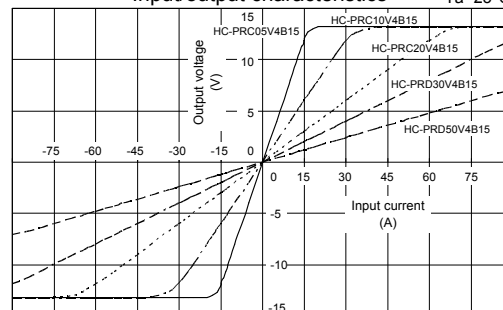


Noise characteristics (Effects of impulse noise)



Input/output characteristics

Ta=25°C



Note: The marks "◁" means 0V or 0A.