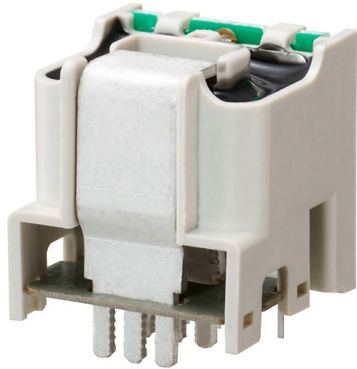
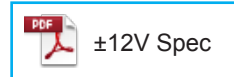
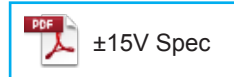


**HC-PDK**



- Rated current 50A ~ 100A
- Superior noise-resistance
- Superior saturation characteristics
- Reduced height compact design
- Single-power supplies also available
- For additional ±15V and ±12V products, contact sales@dgseals.com or click below

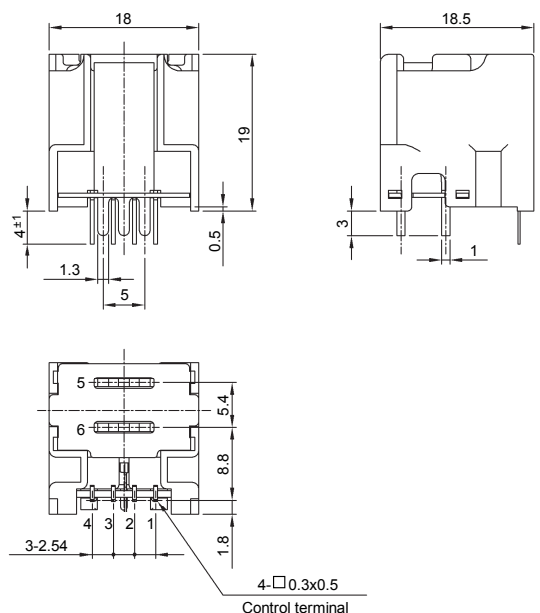


**Applications**

Inverters, Servo drivers, Power supply equipment, Uninterruptible power supply (UPS), NC machine tools, Welders

**Dimensions**

(mm)



- Terminal No.
- 1 - (-) terminal
  - 2 - GND
  - 3 - (+) terminal
  - 4 - Output
  - 5 - (+) input
  - 6 - (-) input

Weight : 10g

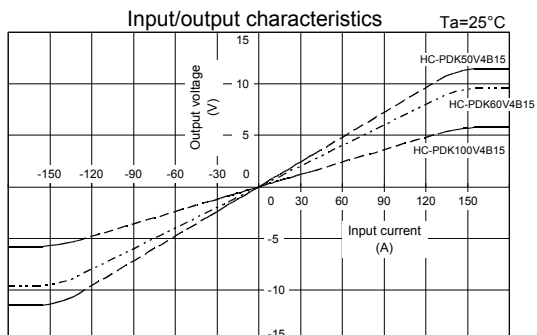
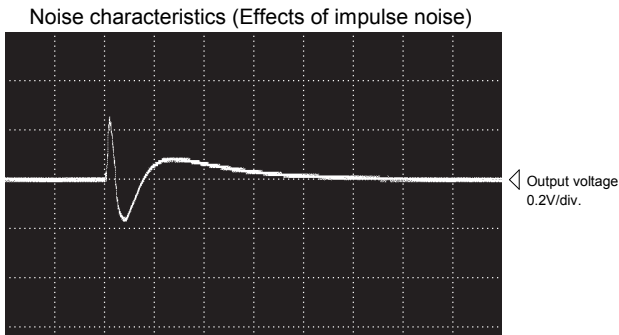
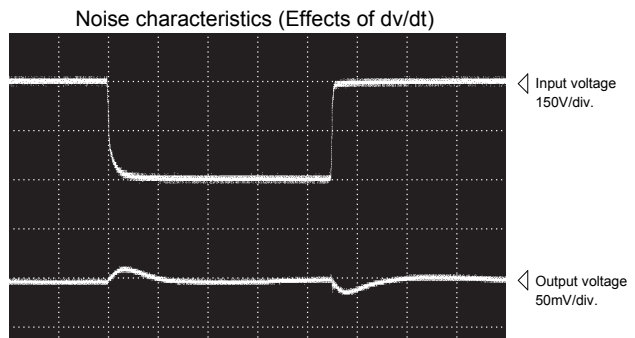
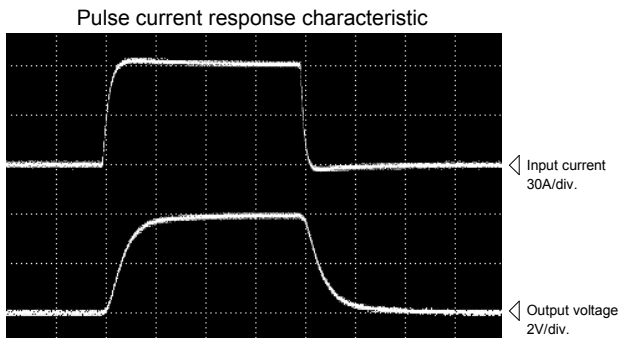
General tolerance: ±0.5

**Specification** Ta=25°C

Type	HC-PDK50V4B15	HC-PDK60V4B15	HC-PDK100V4B15
Rated current [ If ]	±50A	±60A	±100A
Continuously flowing DC current	±100A		
Saturation current [ Is ]	±150A		
Linearity limits	0~±135A		
Size of primary busbar	Busbar 1 x 7.8		
Turns	1		
Rated output [ Vh ]	±4V±1.5% (RL=10kΩ)		
Residual output [ Vo ]	Within ±50mV		
Output linearity	Within ±1%		
Response time	Within 10μs (at di/dt=If/μs)		
Response performance	Within 10%		
Hysteresis voltage range	Within 60mV		
Output Temp. Coef.	Within ±0.1%/°C		
Residual output Temp. Coef.	Within ±2mV/°C		
Control power supply	±15V±5%		
Consumption current	Within 20mA		
Operating Temp.	-10°C~+80°C		
Storage Temp.	-15°C~+85°C		
Dielectric withstand voltage	2500V AC 50/60Hz 1minute		
Insulation resistance	Not less than 500MΩ 500V DC		

Note1) The indicated residual voltage is the one after the core hysteresis is removed.

**Characteristics chart** HC-PDK60V4B15 5μs/div. Time base



Note: The marks "◁" means 0V or 0A.